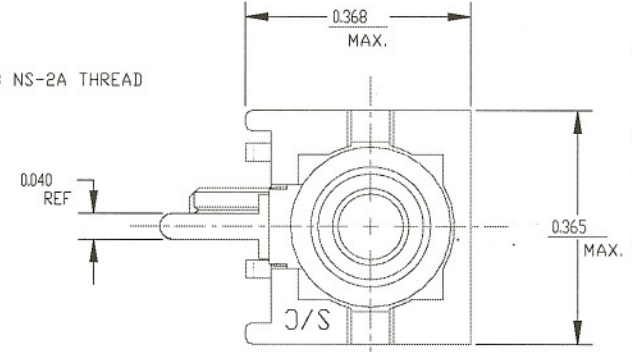
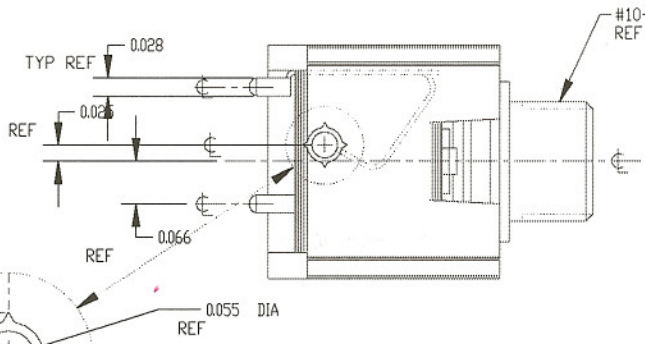
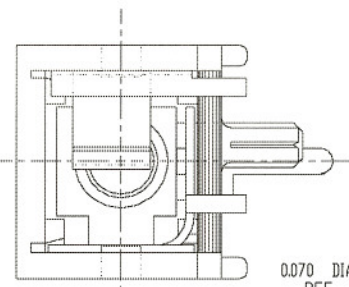
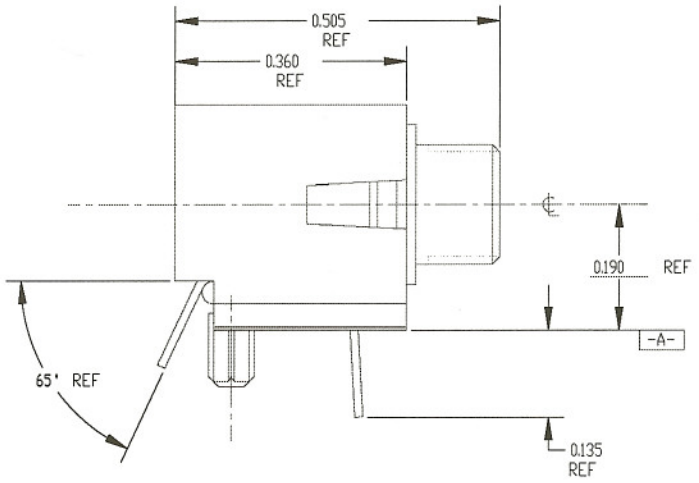


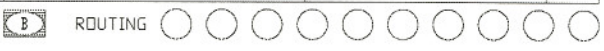
RECOMMENDED FOOTPRINT
COMPONENT SIDE
SCALE = 8 : 1

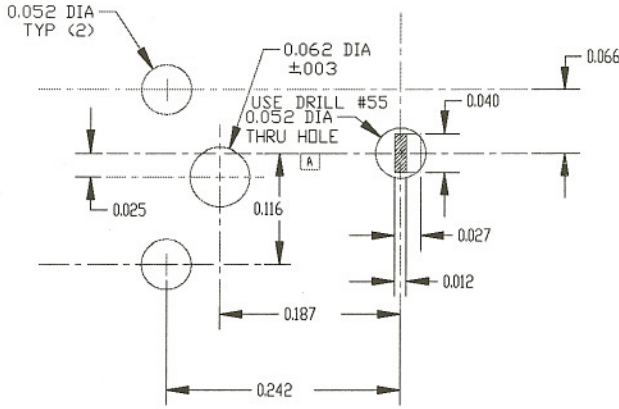


CUSTOMER DRAWING
CAD/CAM DWG. NO.
s.mdp21ra_cd
SHEET 1 OF 1

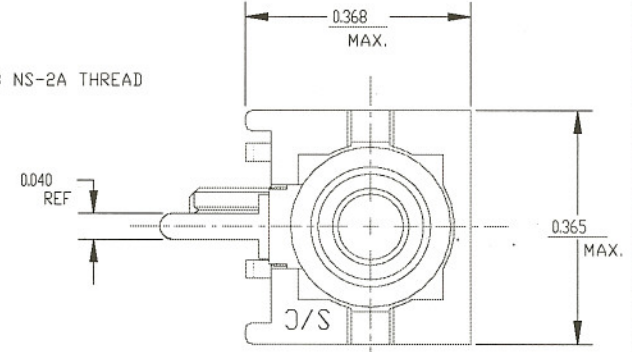
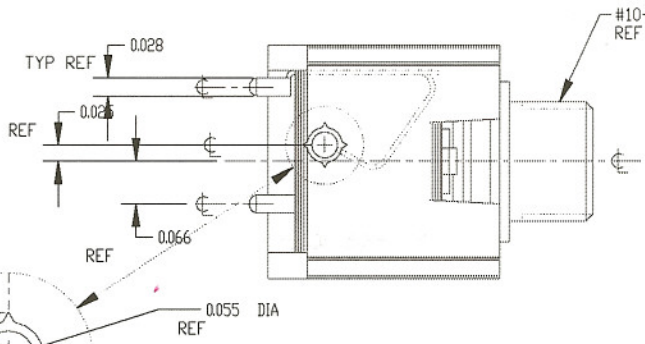
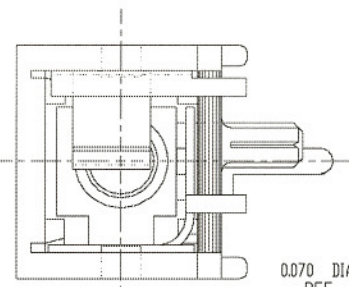
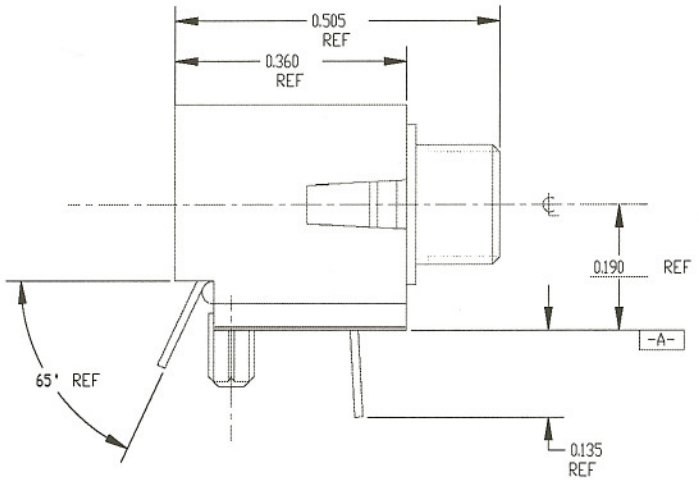
- NOTES:
- MATERIAL AND FINISHES:
-PLASTIC TO BE LIQUID CRYSTAL POLYMER
U.L. RECOGNIZED 94 V-0.
-THREADED BUSHING: BRASS ALLOY NICKEL PLATED.
-TIPSPRING: PHOS. BRONZE ALLOY
SELECTIVE PLATE: NICKEL AND TIN-LEAD.
-SLEEVE/GROUND TERMINAL, BRASS ALLOY
TIN-LEAD W/NICKEL UNDERPLATE.

STAR SYMBOL DENOTES CRITICAL DIMENSION. SEE S/C ENGINEERING STANDARD ES-0001.					THIS DRAWING DESCRIBES A DESIGN CONSIDERED PROPRIETARY IN NATURE, DEVELOPED AND MANUFACTURED BY SWITCHCRAFT INC. AND IS RELEASED ON A CONFIDENTIAL BASIS FOR IDENTIFICATION PURPOSE ONLY.				
UNLESS OTHERWISE SPECIFIED					SIZE	WIDTH	MULT	LBS./M	TEMPER
1. ALL DIMENSIONS IN INCHES 2. DECIMAL DIMENSIONS #005 3. FRACTIONAL DIMENSIONS #1/64 4. ANGLES #1/2° 5. ALL DIA'S CONCENTRIC WITHIN .005 T.I.R. 6. REMOVE ALL BURRS 7. MAKE NO DIMENSIONAL ALLOWANCES FOR APPLIED FINISHES, I.E., PLATING, PAINTING, ETC. 8. HOLES ON THE SAME CENTERLINE MUST BE ALIGNED WITHIN #002					FINISH SPEC. NO.		MATERIAL SPEC. NO.		
A FIRST DRAWN 3-24-94 ES GHJ ISSUE CHANGE NO. DATE BY APP'D					FIRST USED ON		SCALE 1:1875		
REVISIONS					DATE DRAWN 3-24-94	BY ES	CHK'D BMD 4-19-94	APP'D GHJ 4-19-94	Switchcraft [®] MICRO JACK PART NO. MDP21RA ISSUE A
DO NOT SCALE DRAWING					NAME		PART NO. MDP21RA		





RECOMMENDED FOOTPRINT
COMPONENT SIDE
SCALE = 8 : 1



CUSTOMER DRAWING
CAD/CAM DWG. NO.
s.mdp21ra_cd
SHEET 1 OF 1

- NOTES:
- MATERIAL AND FINISHES:
-PLASTIC TO BE LIQUID CRYSTAL POLYMER
U.L. RECOGNIZED 94 V-0.
-THREADED BUSHING: BRASS ALLOY
NICKEL PLATED.
-TIPSPRING: PHOS. BRONZE ALLOY
SELECTIVE PLATE: NICKEL AND TIN-LEAD.
-SLEEVE/GROUND TERMINAL, BRASS ALLOY
TIN-LEAD W/NICKEL UNDERPLATE.

<p>★ STAR SYMBOL DENOTES CRITICAL DIMENSION. SEE S/C ENGINEERING STANDARD ES-0001</p> <p>UNLESS OTHERWISE SPECIFIED</p> <p>1. ALL DIMENSIONS IN INCHES 2. DECIMAL DIMENSIONS #005 3. FRACTIONAL DIMENSIONS #1/64 4. ANGLES #1/2° 5. ALL DIA'S CONCENTRIC WITHIN .005 T.I.R. 6. REMOVE ALL BURRS 7. MAKE NO DIMENSIONAL ALLOWANCES FOR APPLIED FINISHES, I.E., PLATING, PAINTING, ETC. 8. HOLES ON THE SAME CENTERLINE MUST BE ALIGNED WITHIN #002</p>					<p>THIS DRAWING DESCRIBES A DESIGN CONSIDERED PROPRIETARY IN NATURE, DEVELOPED AND MANUFACTURED BY SWITCHCRAFT INC. AND IS RELEASED ON A CONFIDENTIAL BASIS FOR IDENTIFICATION PURPOSE ONLY.</p>														
<p>REVISIONS</p> <table border="1"> <thead> <tr> <th>ISSUE</th> <th>CHANGE NO.</th> <th>DATE</th> <th>BY</th> <th>APP'D</th> </tr> </thead> <tbody> <tr> <td>A</td> <td>FIRST DRAWN</td> <td>3-24-94</td> <td>ES</td> <td>GHJ</td> </tr> </tbody> </table>					ISSUE	CHANGE NO.	DATE	BY	APP'D	A	FIRST DRAWN	3-24-94	ES	GHJ	<p>SIZE</p> <p>FINISH SPEC. NO.</p> <p>FIRST USED ON</p> <p>DATE DRAWN 3-24-94</p> <p>BY ES</p> <p>CHK'D BMD 4-19-94</p> <p>MULT</p> <p>SCALE 1:1875</p> <p>APP'D GHJ 4-19-94</p> <p>NAME MICRO JACK</p>		<p>MATERIAL SPEC. NO.</p> <p>Switchcraft[®]</p> <p>PART NO. MDP21RA</p>		<p>TEMPER</p> <p>ISSUE A</p>
ISSUE	CHANGE NO.	DATE	BY	APP'D															
A	FIRST DRAWN	3-24-94	ES	GHJ															

